

DYNART/FIX. Stereotaxy from head to toe.

Upgrade any* TPS to a Stereotactic System

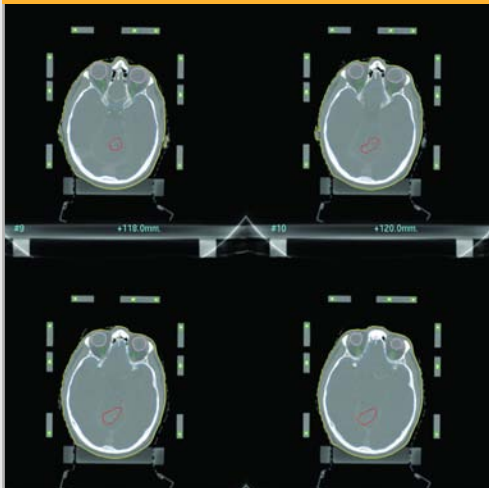
Independent ERGO++ Localizer Software

The independent solution to upgrade any* TPS to Stereotaxy

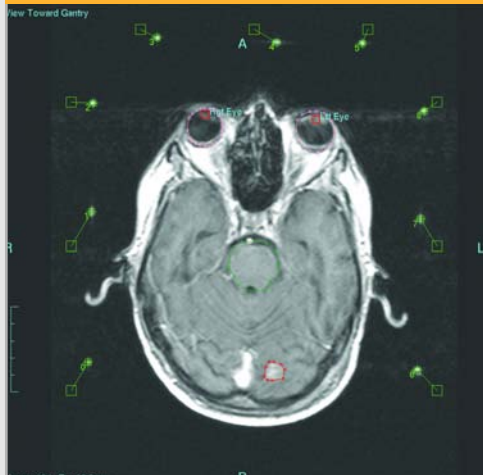
- Automatic marker detection
- Compatible with most stereotactic frames available today
- Easy configuration of new stereotactic frame geometries
- Automatic report of stereotactic calibration accuracy
- Submillimetric accuracy
- Full DICOM RT compatibility
- Intuitive and user friendly interface

It requires just three simple steps:

Step 1: Import of treatment plan



Step 2: Automatic Localizer detection



Step 3: Output of stereotactic coordinates

List of available points:

| Image# | Name | DICOM Coordinates | Stereotactic Coordinates |
|--------|------------|---------------------------|---------------------------|
| 14 | Typo Int.1 | (+14.0, +118.8, -129.0) | (+110.7, +50.9, +42.2) |
| 21 | Left Eye | (+38.0, +4.2, -108.0) | (+134.5, +165.4, +59.7) |
| 21 | Right Eye | (-25.7, +1.8, -108.0) | (+70.9, +167.6, +59.9) |
| -- | Typo Int.2 | (+0.0, +50.0, -100.0) | (+96.7, +119.4, +67.5) |

Rename Point type: Target Marker Tracking Isocenter
 Create Target after editing

Enter DICOM coordinate Stereotactic coord.

| | | | | | |
|---|-----------------------------------|------|---|-------------------------------------|------|
| X | <input type="text" value="4"/> | [mm] | X | <input type="text" value="+96.7"/> | [mm] |
| Y | <input type="text" value="50"/> | [mm] | Y | <input type="text" value="+119.4"/> | [mm] |
| Z | <input type="text" value="-100"/> | [mm] | Z | <input type="text" value="+67.5"/> | [mm] |

Calculate

List of ISOCENTERS:

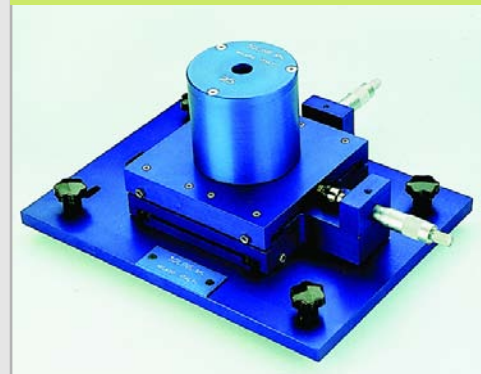
| # | DICOM Coordinates | Stereotactic Coordinates |
|---|-------------------|--------------------------|
| | | |

Select plate to be plotted: Right Left Anterior All Select Plot rotation: 0 degrees 90 degrees

Close Save Delete Plot

For SRS we do also offer a complete product line for Cones in addition to our DMLCs

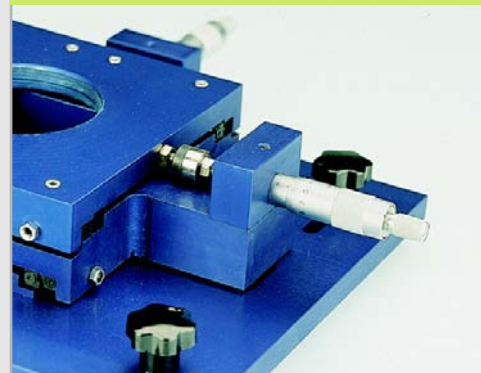
Universal Collimator Holder



Cones customized for your linac



Includes micrometric adjustments



QA accessories to perform eg Winston-Lutz-Test



* requires DICOM RT compatibility